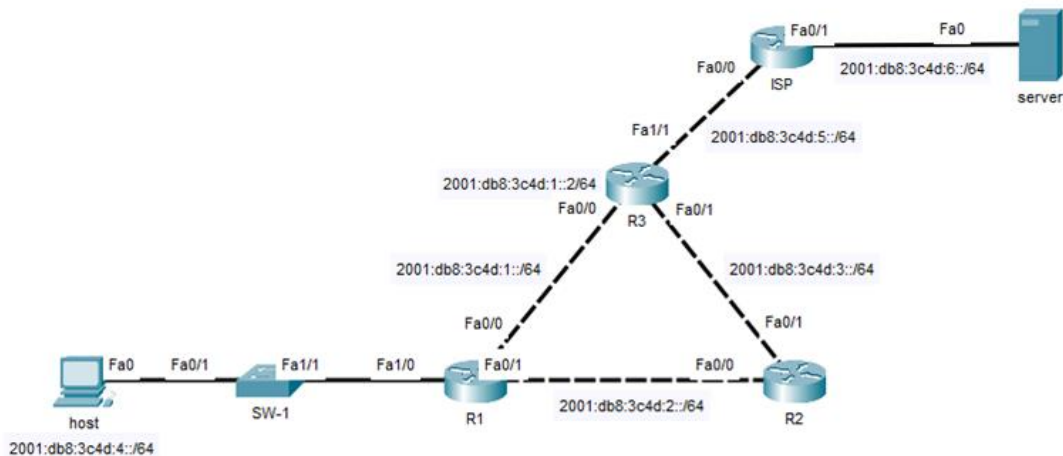


IPv6 Static Route

Lab Summary

Configure an IPv6 static route on R1 so that hosts connected to SW-1 have internet access.

Figure 1 Lab Topology



Lab Configuration

Start Packet Tracer File: **ipv6 static route.pkt**

Click on *R1* icon and select *CLI* folder.

Step 1: Enter global configuration mode

```
R1 > enable
```

```
R1# configure terminal
```

Step 2: Configure IPv6 static route on R1 to R3 with destination subnet `2001:db8:3c4d:6::/64` and `2001:db8:3c4d:1::2` as next hop address.

```
R1(config)# ipv6 unicast-routing
```

```
R1(config)# ipv6 route 2001:db8:3c4d:6::/64 2001:db8:3c4d:1::2
```

Step 3: Verify Lab

Ping server `2001:db8:3c4d:6::2` to verify the static route from R1 to R3 router is working correctly. Run the traceroute command as well to verify the forwarding path to server. Confirm that the static route is installed in the routing table of R1.

```
R1# ping 2001:db8:3c4d:6::2
```

R1# **tracert 2001:db8:3c4d:6::2**

R1# **show ipv6 route**

IPv6 Routing Table - 8 entries

```
C 2001:DB8:3C4D:1::/64 [0/0]
  via ::, FastEthernet0/0
L 2001:DB8:3C4D:1::1/128 [0/0]
  via ::, FastEthernet0/0
C 2001:DB8:3C4D:2::/64 [0/0]
  via ::, FastEthernet0/1
L 2001:DB8:3C4D:2::1/128 [0/0]
  via ::, FastEthernet0/1
C 2001:DB8:3C4D:4::/64 [0/0]
  via ::, FastEthernet1/0
L 2001:DB8:3C4D:4::2/128 [0/0]
  via ::, FastEthernet1/0
S 2001:DB8:3C4D:6::/64 [1/0]
  via 2001:DB8:3C4D:1::2
L FF00::/8 [0/0]
  via ::, Null0
```